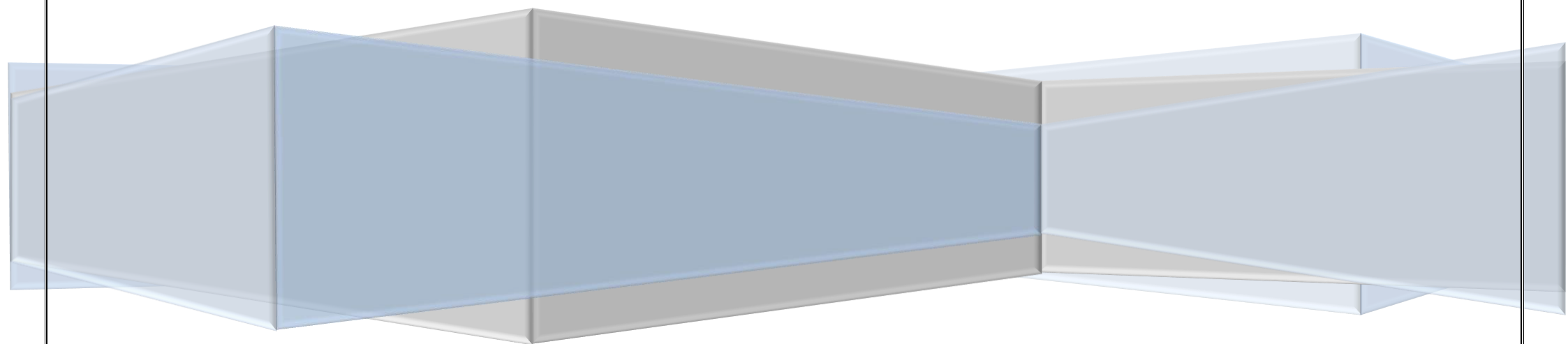


2023/24 GCSE Results

Jacqui Preston



HIGHLIGHTS

- Percentage of pupils gaining a pass in any qualification significantly higher than National Average in Alternative Provision Settings
- Pupils entered for GCSE subjects significantly higher than other AP settings
- FFT early report shows progress is in the top 37% of the country, compared to all schools, which is impressive considering the context
- FFT early report shows strong value added compared to similar settings- Maths +0.1 and English -0.3. Maths is above National Average compared to all schools.
- Pupils gaining Maths and English qualification high compared to similar settings
- Pupils that attended tutoring sessions performed well in core subjects, tutoring is continuing
- Functional Skills was used highly effectively, pupils that didn't attain a Pass or Grade 4 in Maths/English gained Functional skills and Entry Level qualifications.

CELEBRATIONS

We have set new school records for

Early report showing Value Added P8 for Mathematics GCSE at +0.3

First Grade 4 achieved this year in GCSE Biology at THS

98% of all pupils achieved a Pass in any subject

NEXT STEPS

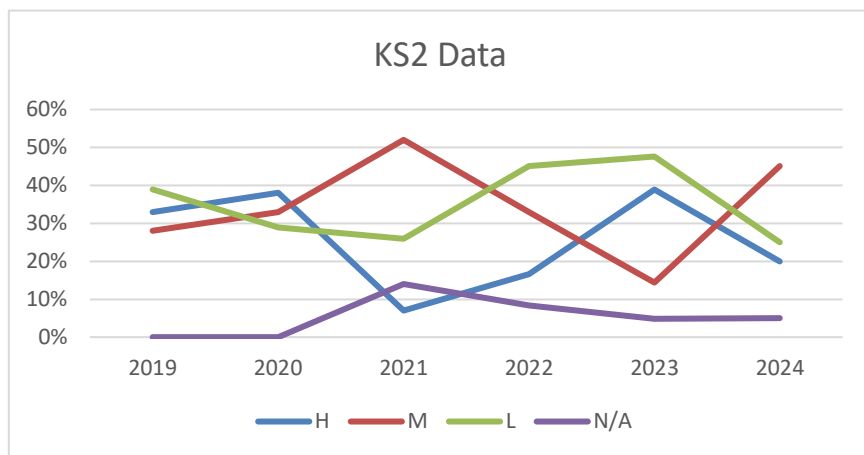
- Further deeper analysis once remarks GCSE have been ascertained
- Post Mock action plan:
 - QLA analysis in all subjects in order to analyse gaps in knowledge, curriculum adjusted accordingly and bespoke plans made
 - Staff to meet with pupils when they have been given their mock results to discuss bespoke next steps, notes collated and shared
 - Pupils at risk of not gaining a pass to be offered Entry Level
 - English and Maths match up to be monitored closely and interventions offered (Tutor Trust to continue to support)
 - Moderation support to be offered with neighbouring schools
- Functional skills English and Maths to be offered to all Year 11 students
- Edexcel Awards Algebra and Number January series
- Moving pupils from a 3 to a 4 to be a priority
- Further support for Science to ensure results are in line with Maths and English (although these are all still higher than National AP settings)

TAEP Student Demographics

Number of pupils at the end of KS4	40
Number admitted in Year 11	22
Number admitted in Year 10	10
Number admitted before Year 10	4

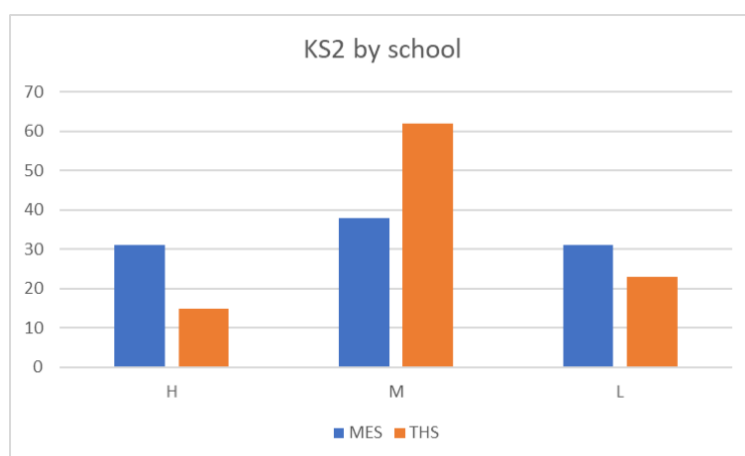
THS	Number of Pupils (27)	%		TMES	Number of Pupils (13)	%
Girls	8	30%		Girls	9	69%
Boys	19	70%		Boys	4	31%
PP	16	59%		PP	7	53%
BAME	6	22%		BAME	1	8%
EHCP	11	41%		EHCP	5	38%
SEND	27	100%		SEND	13	100%
EHCP Boys	8	30%		EHCP Boys	0	0
EHCP Girls	3	11%		EHCP Girls	7	54%
EAL	3	11%		EAL	1	8%
CME	1	4%		CME	0	0
LAC	6	22%		LAC	0	0

TAEP (21)												
KS2 Band	Pupils						Percentage					
	2019	2020	2021	2022	2023	2024	2019	2020	2021	2022	2023	2024
Higher	6	8	2	4	8	8	33 %	38%	7%	16.6%	38.9%	20%
Middle	5	7	15	8	3	18	28 %	33%	52%	33%	14.38%	45%
Lower	7	6	8	11	10	12	39%	29%	26%	45%	47.61%	25%
N/A	0	0	4	1	1	2	0	0	14%	8.3%	4.76%	5%



Demographics by School

Numbers	MES	THS
H	4	4
M	5	16
L	4	6
	13	26
%	MES	THS
H	31	15
M	38	62
L	31	23



TAEP							
	Total Number	Entries English	Entries Maths	Entries Science	4-9 in English and Maths or equivalent	1-9 in English or Maths GCSE or equivalent	A pass in any qualification
National Alternative Provision	8,845	42%	62%	32%	2.2%	18.9%	57.7%
TAEP 2024	40	90%	92.5%	60%	38%	98%	95%

ABSENCE

Overall absence 2022 National PRU figure is 38.8%	TAEP Overall Attendance Year 11: 42.5%
Persistent absence 2022 National PRU figure is 80.9%	PA: 100%

HEADLINE FIGURES

Qualification	Number (all pupils on roll)	Percentage (%)
5+ (4-9) inc EM	2	5
5 + (1-9) 2022 National Alternative Provision figure is 1.9%	10	25
4+ (1-9) 2022 National Alternative Provision figure is 4.9%	27	67.5
3+ (1-9)	30	75
2+(1-9)	37	92.5
Pass in any	38	95
% Pass in Maths and English	34	85
% Pass in Maths	34	85
% Pass in English	36	90

Qualifications and Attainment

Average number of qualifications taken per pupil	138 GCSE's 106 Alternative Qualifications 6.1 Average
% entered for at least 5 qualifications	35%
% achieving 5 or more qualifications at any level	35%
% achieving 1 or more qualifications at Level 1	98%
% achieving 1 or more qualifications at any level	98%

Year 11 Destination Data

EETS TOTAL	30
College / 6th form / educated at home	18
Programmes of Study	8
Apprenticeships	2
Working	2
Working Towards TOTAL	4
Re-engagement provision	4
NEET TOTAL	9
Teenage Parent	1
NEET	8

Although these are mostly the ones expecting to start on the Prove It Programme of Study Programme these are being chased up and likely to change

TAEP BOYS AND GIRLS COMBINED

THS

Gender	FSM6	EHCP	SEN	EAL	BAME	Attendance	HML	Biology	English	English	Maths	Physics	Combin	Stats	Chemis	Media	Travel	Citizens	History	Pyscholo	RE	Food Tec	French
F		x	K			23.7	H	3	3		5	3											
F	x		K		x	21.7	H		X		X							x					
F	x		K	X		57.1	L	2	1		2	2											
F		X	E			71.1	M		3		3			3			3	2					
F	x	X	E		X	73.7	M	1	3		2	1											
F	x		K			47.9	M	1	3		2	2											
F	x		K		X	27.4	M	3	4		3	2											
F		X	E			33.7	M	2	2		1	1									1		
M	x		K			37.1	H		1		U												
M		X	E			73.1	H		9	9	4								4	4		4	3
M	x	x	E			23.4	L	1	1		1	1											
M	x	X	E			30.6	L	1	2		1	1											
M	x		K			28.4	L	1	2		1	1											
M	x	X	E			48.3	L		2		2												
M	x	X	E			20.1	L		2		1												
M	X	x	E	X	X	12.3	M	1	2		1	1											
M	x		K			74.8	M		3		3	4	3					1	1				
M			K			55.8	M		5	4	4			4							5		
M	x		K			36.4	M	3	3		3	2											
M	x	x	E		x	43.7	M	2	3		4	2						1					
M			K			56.3	M	3	2		3	2											
M			K	x	x	69.6	M	2	3		4	3											
M			K			46.5	M	3	3		5	3											
M	x		K			27.3	M	1	3		3	2											
M			K			30.7	M	1	2		3	1											
M			K			0	M		1														
M		x	E			47.4	No data	4	4		4	3						1					

TMES












Gender	FSM6	EHCP	SEN	EAL	BAME	Attendance	HML	Biology	English	English	Maths	Physics	Combin	Stats	Chemis	Media	Travel	Citizens	History	Psycholo	RE	
F	x	X	E			27.9	H		1		2											
F			K			6.1	H		4		4											
F		X	E			67.1	H		2		5			5			x					
F	x		K			54.7	H		3		3		43						3			
F	x		K			2.5	L		Not entered													
F	x	X	E	X	X	30.6	M		3		3		3 2									
F	x	X	E			36.1	M		4		3											
F			K			32.4	M		1		2											
F		X	K			11.9	M															
M	x		K			72.6	L		3		1		11				x		1			
M			K			5.9	L		4	4	3		43				1				2	3
M	x		K			34.7	L	U		U			U									
M			K			37.7	M		3 X		3											

THS

Entries	Maths	English	English	Combin	Biology	Chemis	Physics	Travel	Stats	Re (Sho	RE (Full	Pyschol	Geograp	Spanish	Art Fine
9	0.0%	3.8%	50.0%	0.0%	0.0%		0.0%	0.0%	0.0%	0.0%	0.0%	0.0%	0.0%	0.0%	0.0%
8	0.0%	0.0%	0.0%	0.0%	0.0%		0.0%	0.0%	0.0%	0.0%	0.0%	0.0%		0.0%	0.0%
7	0.0%	0.0%	0.0%	0.0%	0.0%		0.0%	0.0%	0.0%	0.0%	0.0%	0.0%		0.0%	0.0%
6	0.0%	0.0%	0.0%	0.0%	0.0%		0.0%	0.0%	0.0%	0.0%	0.0%	0.0%		0.0%	0.0%
5	8.0%	3.8%	0.0%	0.0%	0.0%		0.0%	0.0%	0.0%	0.0%	33.3%	0.0%		0.0%	0.0%
4	20.0%	7.7%	50.0%	22.2%	4.5%		0.0%	0.0%	50.0%	0.0%	33.3%	100.0%		100.0%	0.0%
3	28.0%	38.5%	0.0%	33.3%	22.7%		20.0%	25.0%	50.0%	0.0%	0.0%	0.0%		0.0%	100.0%
2	16.0%	30.8%	0.0%	11.1%	18.2%		35.0%	0.0%	0.0%	50.0%	0.0%	0.0%		0.0%	0.0%
1	24.0%	15.4%	0.0%	22.2%	36.4%		35.0%	75.0%	0.0%	50.0%	33.3%	0.0%		0.0%	0.0%
U	4.0%	0.0%	0.0%	11.1%	18.2%		10.0%	0.0%	0.0%	0.0%	0.0%	0.0%		0.0%	0.0%
4 to 9	28%	15%	100%	22%	5%		0%	0%	50%	0%	67%	100%		100%	0%
1 to 9	96%	100%	100%	89%	82%		90%	100%	100%	100%	100%	100%		100%	100%
Total	100%	100%	100%	100%	100%		100%	100%	100%	100%	100%	100%		100%	100%

TMES

Entries	Maths	English	English	Combin	Biology	Chemis	Physics	Travel	Stats	Re (Sho	RE (Full	Pyschol	Geograp	Spanish	Art Fine
9	0.0%	0.0%	0.0%	0.0%	0.0%		0.0%		0.0%	0.0%		0.0%	0.0%		
8	0.0%	0.0%	0.0%	0.0%	0.0%		0.0%		0.0%	0.0%		0.0%	0.0%		
7	0.0%	0.0%	0.0%	0.0%	0.0%		0.0%		0.0%	0.0%		0.0%	0.0%		
6	0.0%	0.0%	0.0%	0.0%	0.0%		0.0%		0.0%	0.0%		0.0%	0.0%		
5	9.1%	0.0%	0.0%	0.0%	0.0%		0.0%		100.0%	0.0%		0.0%	0.0%		
4	9.1%	30.0%	100.0%	22.2%	0.0%		0.0%		0.0%	0.0%		0.0%	0.0%		
3	45.5%	40.0%	0.0%	33.3%	0.0%		0.0%		0.0%	50.0%		0.0%	100.0%		
2	18.2%	10.0%	0.0%	11.1%	0.0%		0.0%		0.0%	0.0%		100.0%	0.0%		
1	9.1%	20.0%	0.0%	22.2%	0.0%		0.0%		0.0%	50.0%		0.0%	0.0%		
U	9.1%	0.0%	0.0%	11.1%	100.0%		100.0%		0.0%	0.0%		0.0%	0.0%		
4 to 9	18%	30%	100%	22%	0%		0%		100%	0%		0%	0%		
1 to 9	91%	100%	100%	89%	0%		0%		100%	100%		100%	100%		
Total	100%	100%	100%	100%	100%		100%		100%	100%		100%	100%		

Progress 8 Overall	-3.16	⊖		 100		
Progress 8 English	-3.47	⊖		 100		
Progress 8 Maths	-1.93	⊖		 100		
Progress 8 Ebacc	-3.49	⊖		 100		
Progress 8 Open	-4.21	⊖		 100		
% 4+ GCSE English & Maths	9%	⊖	66%	 100	68%	 -59.1%
% 5+ GCSE English & Maths	0%	⊖	47%	 100	45%	 -45.4%
% 5+ GCSE 7-9	0%	⊖	16%	 99	15%	 -14.5%

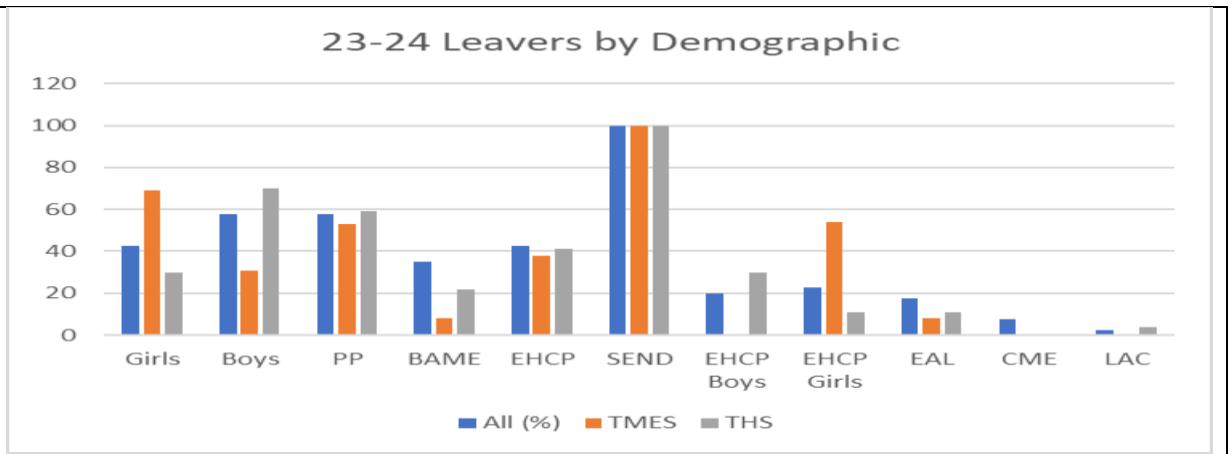
FFT Maths, early report:

Indicator	This assessment	Nationally 2024 (FFT)	Your rank	Estimate (FFT 50)	Diff
Average Points Score	2.6 -	4.8	● ● 100	4.7	 -2.1
FFT Value Added	0.1		● ● 37		
% Grade 4+	25% -	73%	● ● 100	75%	 -50%
% Grade 5+	9% -	54%	● ● 100	51%	 -42%
% Grade 7+	0% -	21%	● ● 100	17%	 -17%

FFT English, early report:

Indicator	This assessment	Nationally 2024 (FFT)	Your rank	Estimate (FFT 50)	Diff
Average Points Score	2.7 -	4.8	● ● 100	4.8	 -2.1
FFT Value Added	-0.3		● ● 81		
% Grade 4+	14% -	72%	● ● 100	72%	 -59%
% Grade 5+	7% -	56%	● ● 100	55%	 -48%
% Grade 7+	3% -	19%	● ● 98	19%	 -15%

Demographic Percentages	TMES	THS	
Girls	42.5%	69%	30%
Boys	57.5%	31%	70%
PP	57.5%	53%	59%
BAME	35%	8%	22%
EHCP	42.5%	38%	41%
SEND	100%	100%	100%
EHCP Boys	20%	0%	30%
EHCP Girls	22.5%	54%	11%
EAL	17.5%	8%	11%
CME	7.5 %	0%	0%



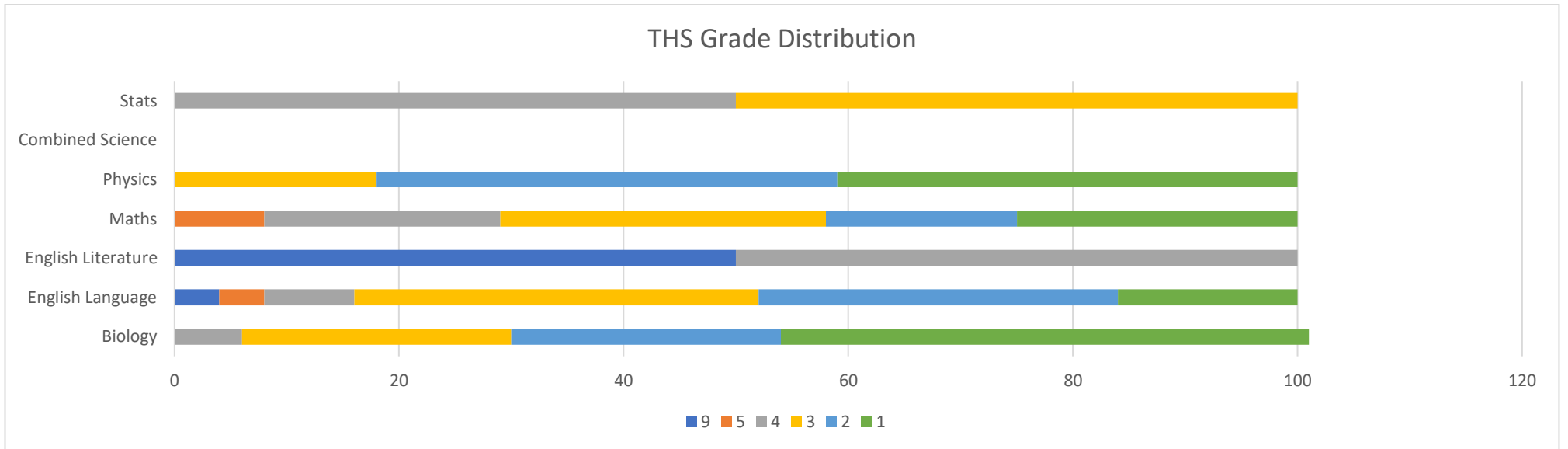
LAC	2.5%	0%	4v %	
-----	------	----	------	--

Grade Distribution- All

Grade	Biology	English	English	Maths	Physics	Combin	Stats	Media	Travel	Citizens	History	Pyschol	RE	Food	Te	French	Art and	Music	P Total	
9	0	1	1	0	0	0	0	0	0	0	0	0	0	0	0	0	0	0	0	10
5	0	1	0	3	0	0	1	0	0	0	1	0	0	0	0	0	1	1	1	8
4	1	5	2	6	0	3	1	0	0	0	1	1	0	1	1	0	0	0	0	21
3	5	14	0	12	4	4	1	0	1	1	0	0	1	0	0	1	0	0	0	44
2	4	9	0	5	7	1	0	0	0	1	0	1	0	0	0	0	0	0	0	28
1	9	6	1	7	7	2	2	1	3	2	3	1	0	1	1	0	1	1	1	47

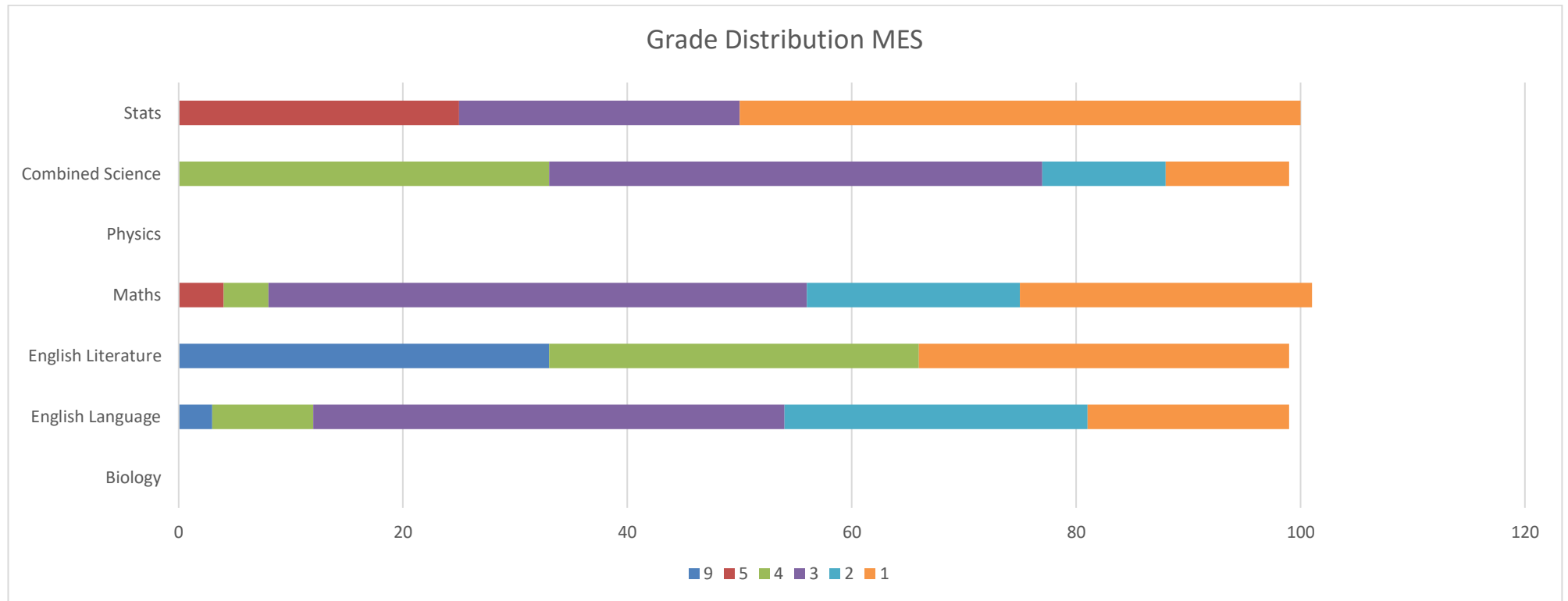
Grade Distribution- THS

Grade	Biology	English	English	Maths	Physics	Combin	Stats	Chemist	Media	Travel	Citizens	History	Pyschol	RE	Food Te	Total
9	0	1	1	0	0	0	0	0	0	0	0	0	0	0	0	2
5	0	1	0	2	0	0	0	0	0	0	0	1	0	0	0	4
4	1	2	1	5	0	0	1	0	0	0	0	1	1	0	1	13
3	4	9	0	7	3	0	1	0	0	1	0	0	0	0	0	25
2	4	8	0	4	7	0	0	0	0	0	1	0	0	0	0	24
1	8	4	0	6	7	0	0	0	0	3	1	1	0	0	0	30
	17	25	2	24	17	0	2	0	0	4	2	3	1	0	1	98

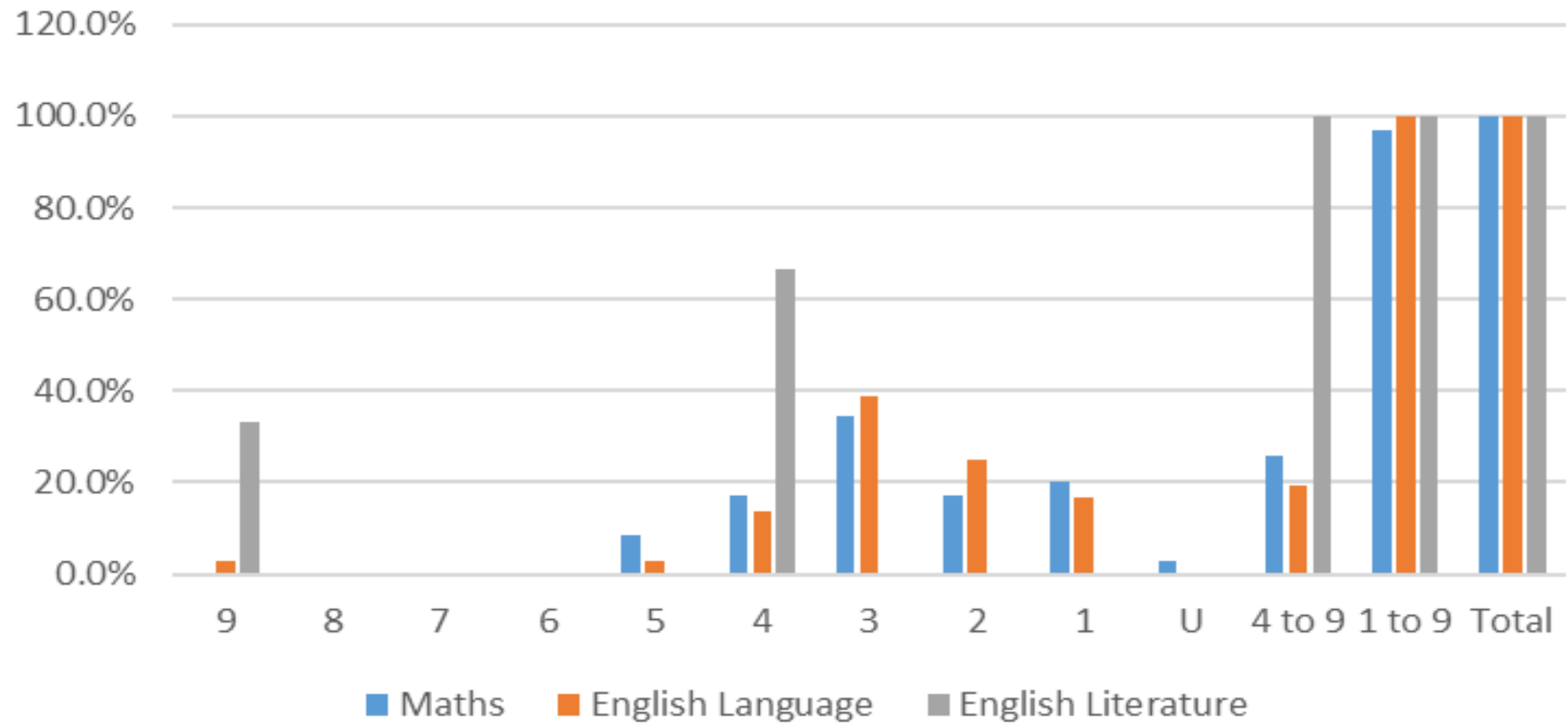


Grade Distribution- TMES

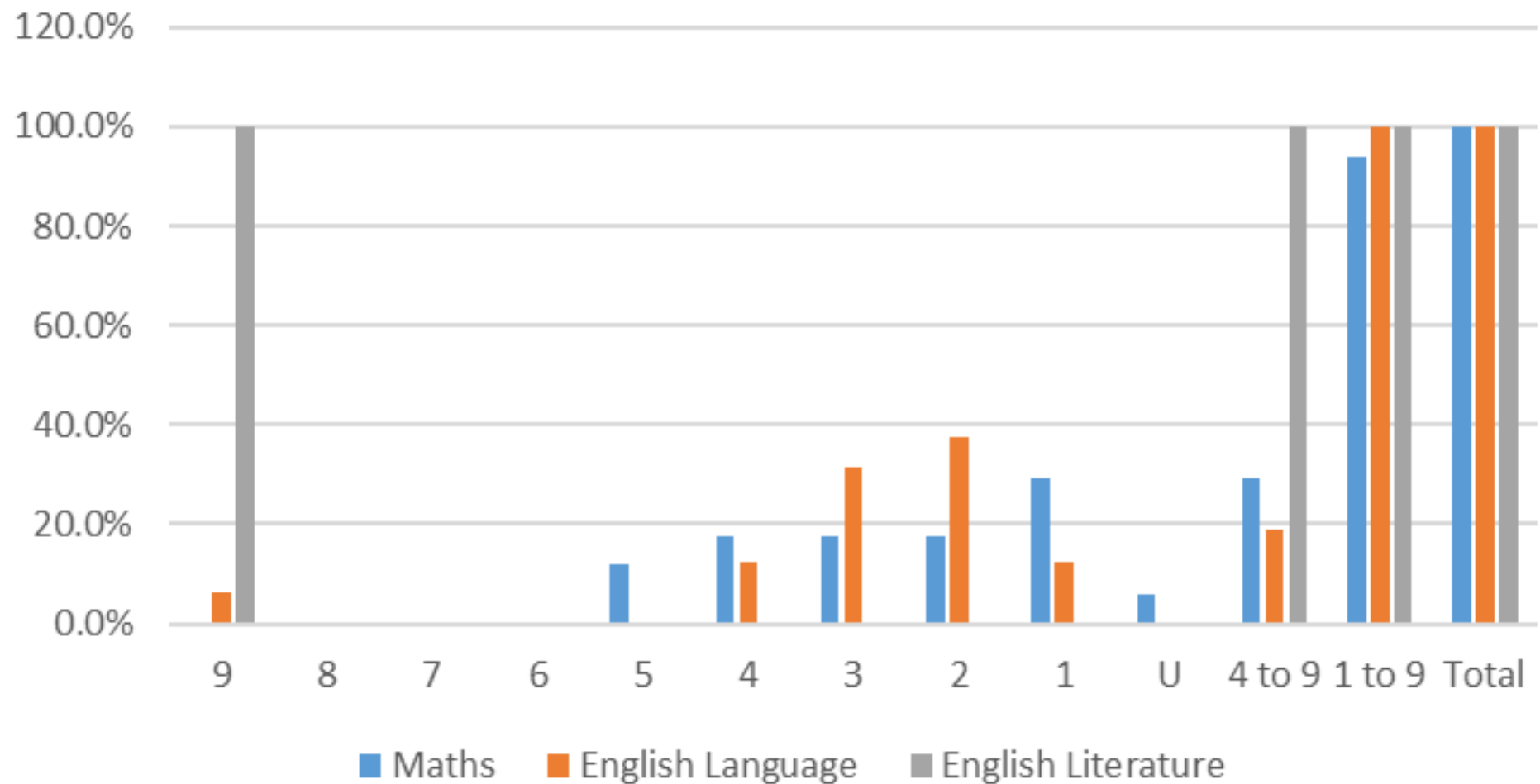
Grade	Biology	English	English	Maths	Physics	Combin	Stats	Chemist	Media	Travel	Citizens	History	Pyschol	RE	Food Te	French	Art and	Music P		
9	0	1	1	0	0	0	0	0	0	0	0	0	0	0	0	0	0	0	0	2
5	0	0	0	1	0	0	1	0	0	0	0	0	0	0	0	0	0	1	1	4
4	0	3	1	1	0	3	0	0	0	0	0	0	0	0	0	0	0	0	0	5
3	0	14	0	12	0	4	1	0	0	1	1	0	0	1	0	1	0	0	0	39
2	0	9	0	5	0	1	0	0	0	0	1	0	1	0	0	0	0	0	0	24
1	0	6	1	7	0	1	2	0	1	3	2	3	1	0	1	0	1	1	1	38
	0	33	3	26	0	9	4	0	1	4	4	3	2	1	1	1	1	2	2	112



Grade Distribution. All. Maths and English



EHCP Maths and English



THS

Girls

Biology	English	English	Maths	Physics	Combin	Stats	Chemist	Media	Travel	Citizens	History
3	3		5	3							
	X		X						x		
2	1		2	2							
	3		3			3		3		2	
1	3		2	1							
1	3		2	2							
3	4		3	2							
2	2		1	1							1

Boys

Biology	English	English	Maths	Physics	Combin	Stats	Chemist	Media	Travel	Citizens	History	Pyschol	RE	Food	Te	French
	1		U													
	9	9	4								4	4		4	3	
1	1		1	1												
1	2		1	1												
1	2		1	1												
	2		2													
	2		1													
1	2		1	1												
	3		3		4	3				1	1					
	5	4	4				4					5				
3	3		3	2												
2	3		4	2					1							
3	2		3	2												
2	3		4	3												
3	3		5	3												
1	3		3	2												
1	2		3	1												
	1															
4	4		4	3					1							
	1		2													

TMES

Girls

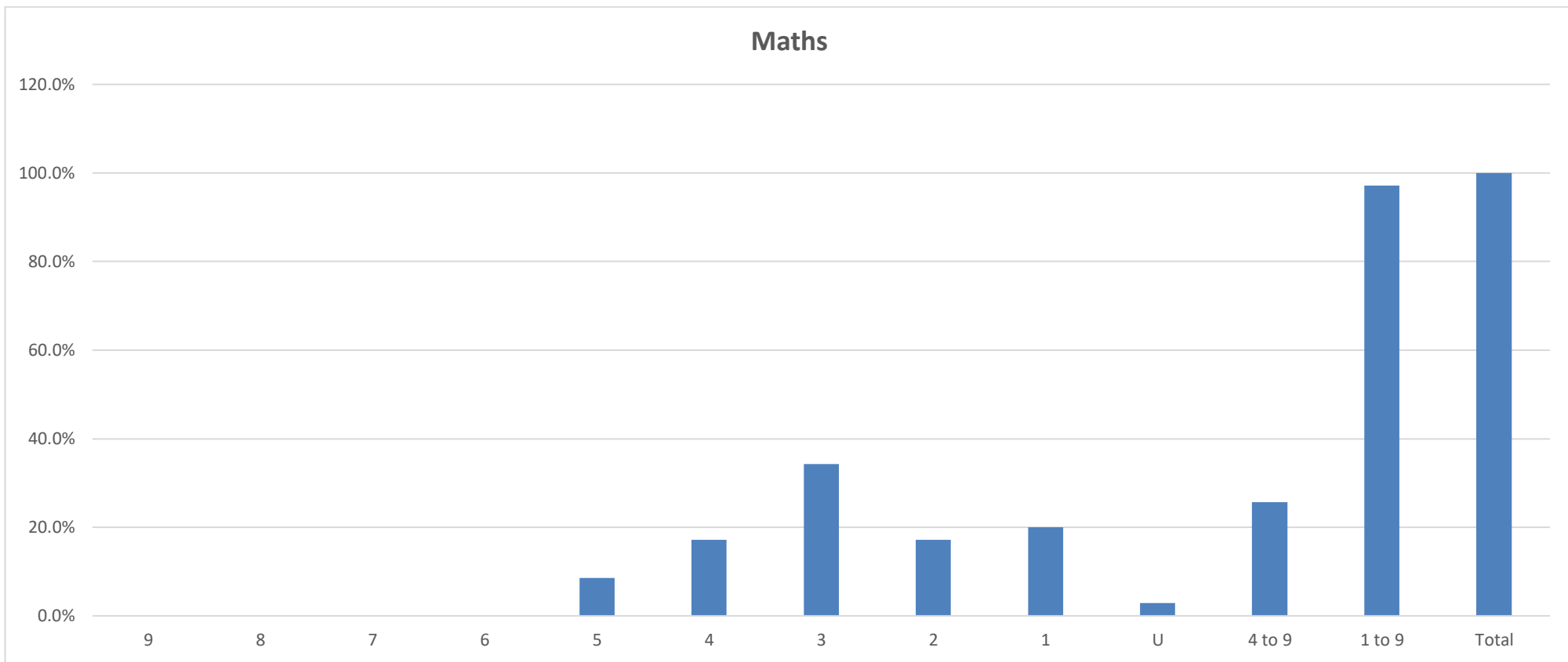
Biology	English	English	Maths	Physics	Combin	Stats	Chemist	Media	Travel	Citizens	History
1		2									
4		4									
2		5			5			x			
3		3		43					3		
		Not entered									
3		3		32							
4		3									
1		2									

Girls

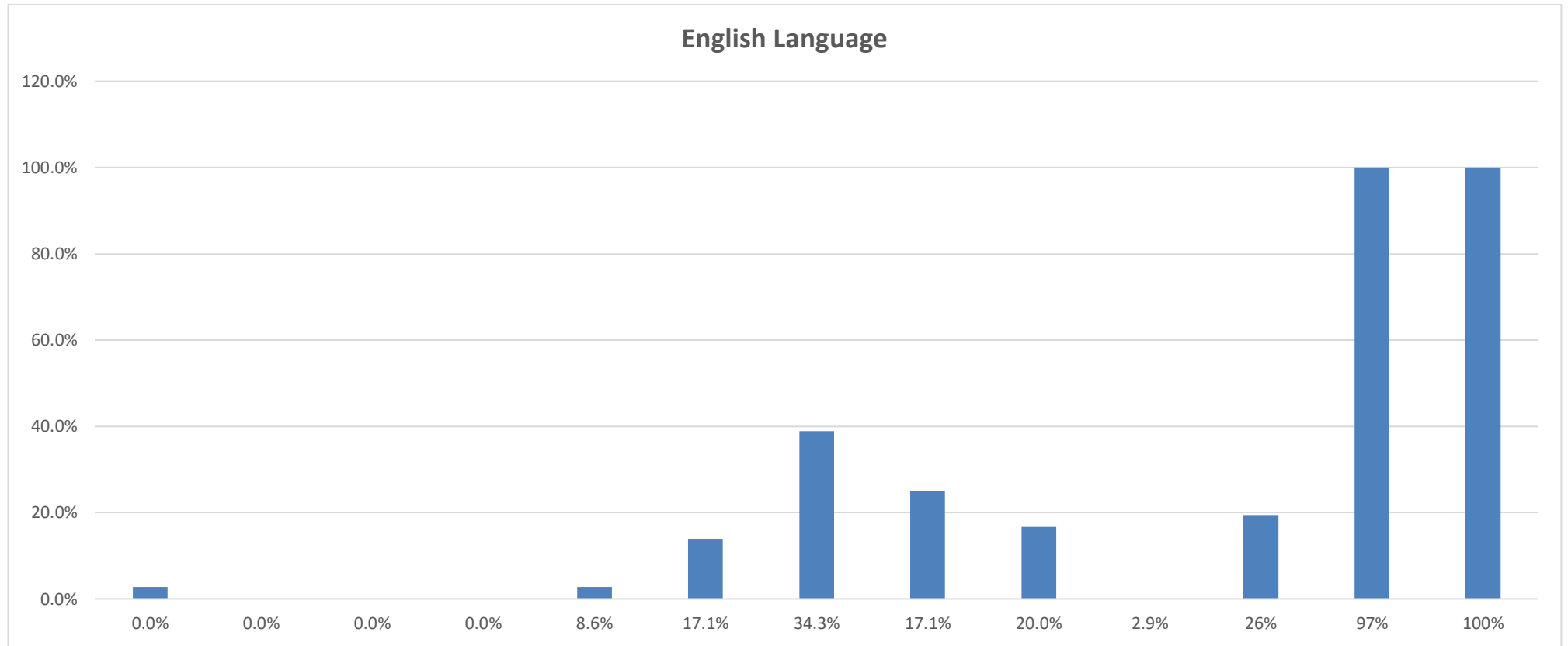
Boys

Biology	English	English	Maths	Physics	Combin	Stats	Chemist	Media	Travel	Citizens	History	Pyschol	RE	Food	Te	French	Art and	Music	Practice
	3		1		11				x	1									
	4	4	3		43			1				2	3						
	U		U		U														
	3	X	3														5	5	

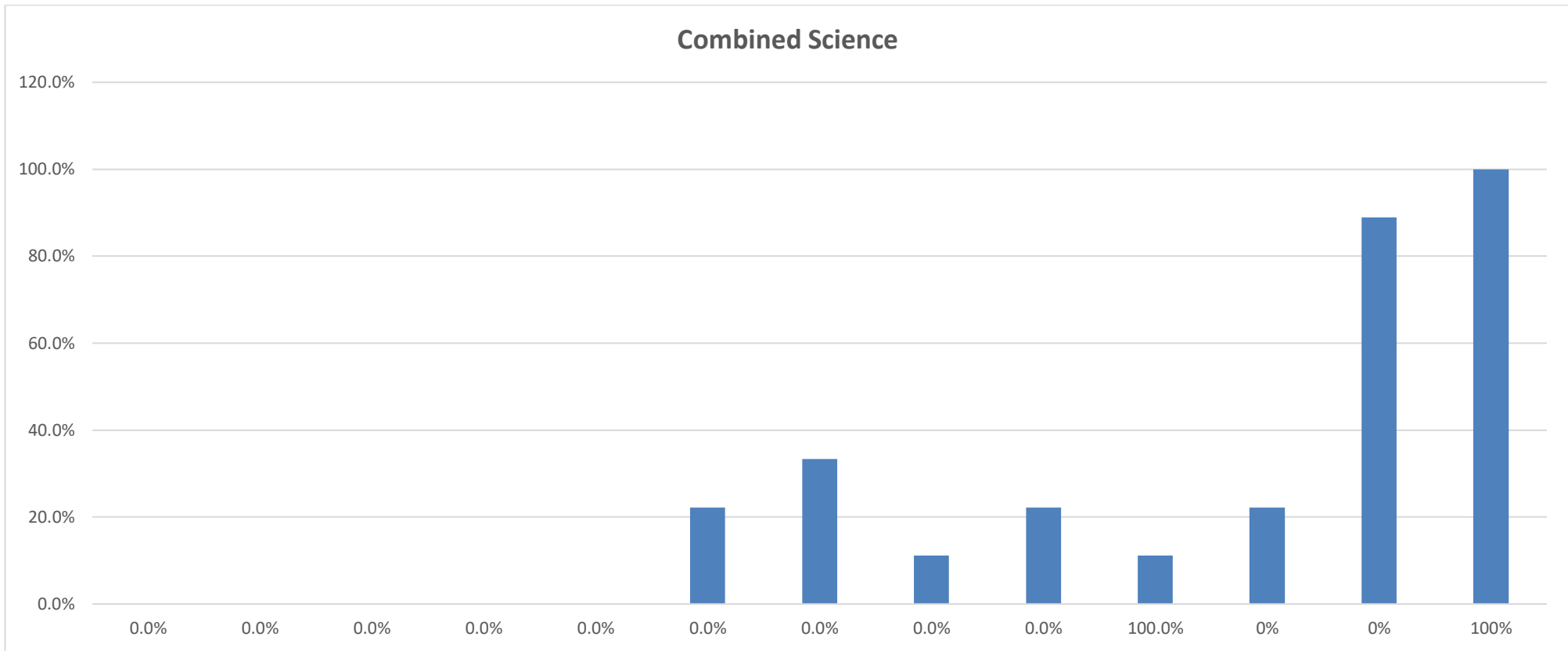
Maths



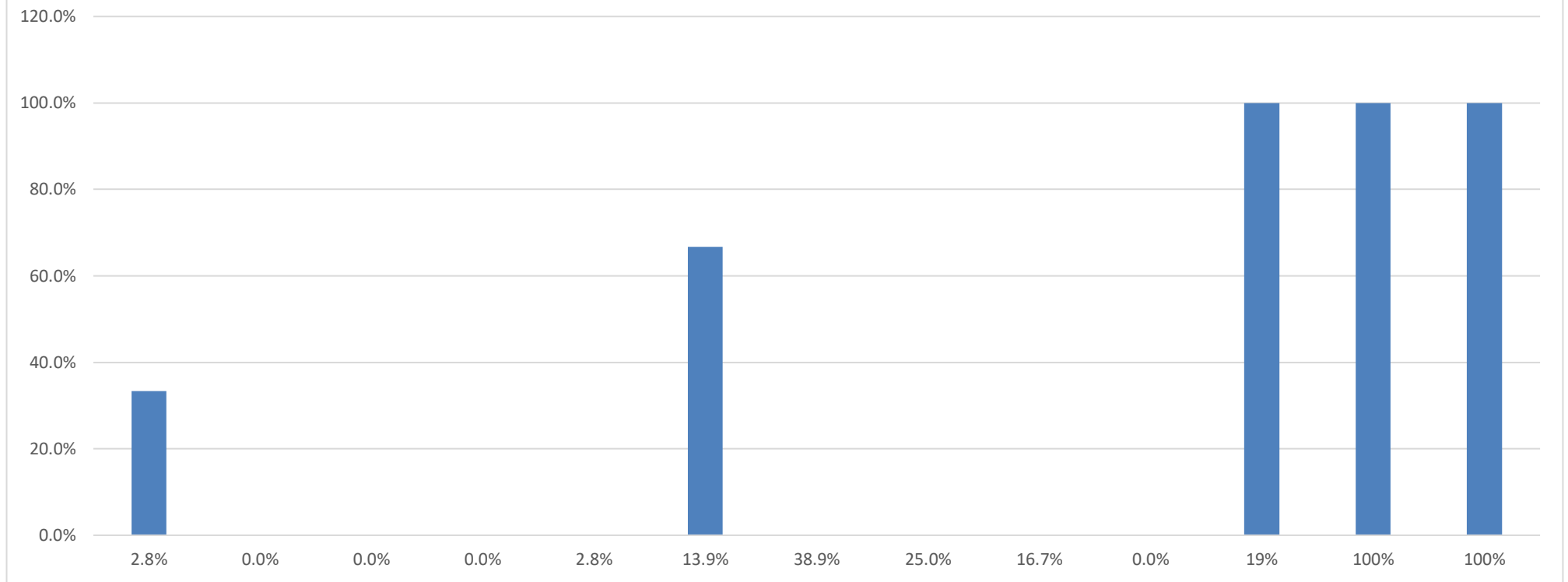
English



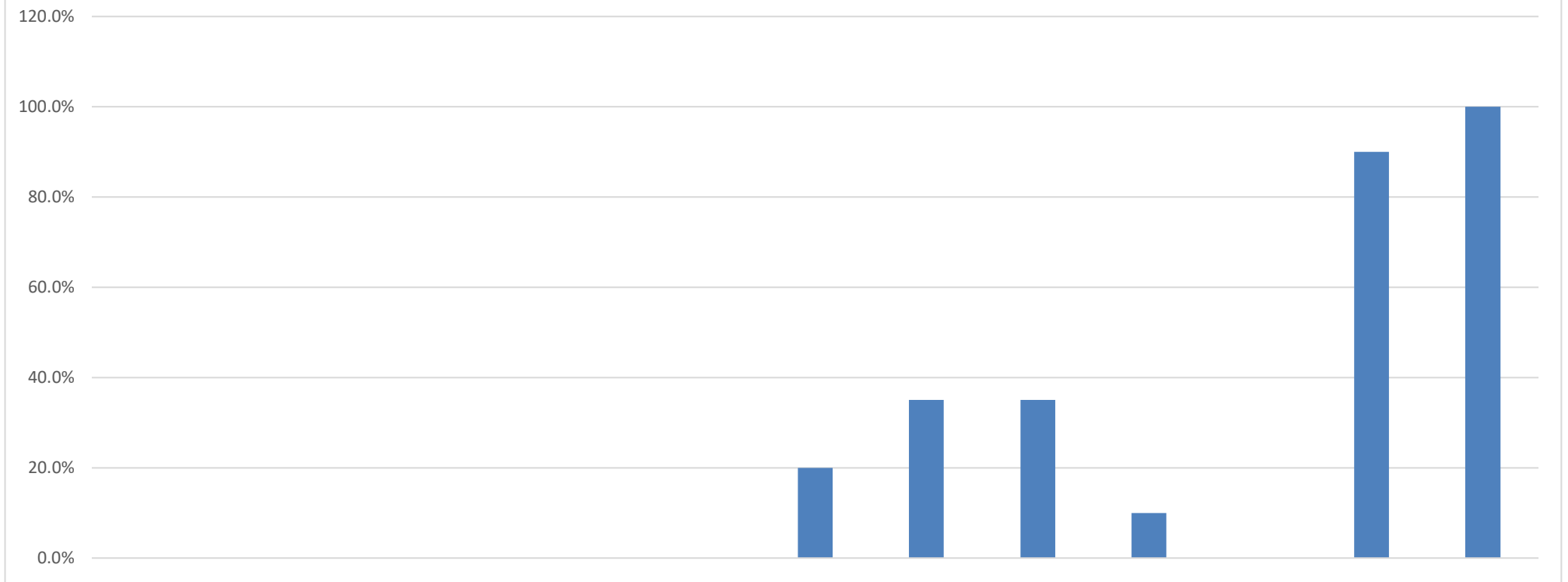
Combined Science



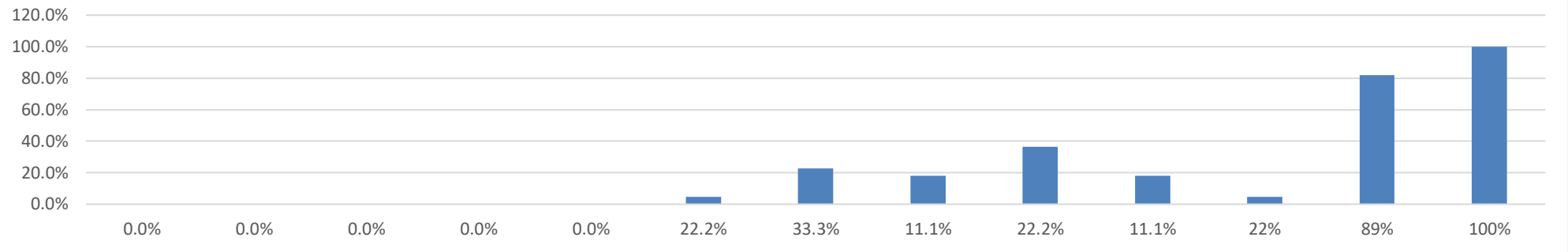
English Literature



Physics



Biology



Maths and English Distributions

